

# Community Foundation of Greater Peterborough



Peterborough Area Fundraisers Network  
Thursday, September 23, 2010

*Community Foundation*  
*of Greater Peterborough*

The colour contrast has been set to maximum.

The colour contrast has been set to maximum.

Community Foundation of Greater Peterborough

## Foundation Mission

To be the vital link between caring community members and local causes that matter. We foster philanthropy by pooling endowed and special funds, while our grants to registered charities enhance the quality of life for our citizens.

In the context of...

...being a philanthropic leader, catalyst and creative force in enhancing and strengthening our community.

*Community Foundation*  

---

*of Greater Peterborough*

The colour contrast has been set to maximum.

The colour contrast has been set to maximum.

Community Foundation of Greater Peterborough

## Community Foundations across Canada

- 1921: Winnipeg Foundation
- 170 Community Foundations from coast to coast
- One of Canada's largest grantmakers
- Together, hold assets of over \$2.8 billion
- Have invested over \$140 million in Canadian communities

*Community Foundation*  
*of Greater Peterborough*

The colour contrast has been set to maximum.

The colour contrast has been set to maximum.

Community Foundation of Greater Peterborough

## Our Approach

- We bring donors to the table as community builders:
  - formulate and realize philanthropic goals
  - match interests and concerns with community needs and organizations
  - find innovative and responsible ways to give donor investments lasting impact

*Community Foundation*  

---

*of Greater Peterborough*

The colour contrast has been set to maximum.

The colour contrast has been set to maximum.

Community Foundation of Greater Peterborough

## Our Approach

- We take the broadest view of what a community is and what it needs to succeed:
  - our grants support everything from shelter, to recreation, the arts, and the environment

Community Foundation of Greater Peterborough

## Our Approach

- We take the long-term view for our community:
  - identify long-term needs and opportunities
  - invest in sustainable solutions
  - help our community become resilient, resourceful, and ready for the future

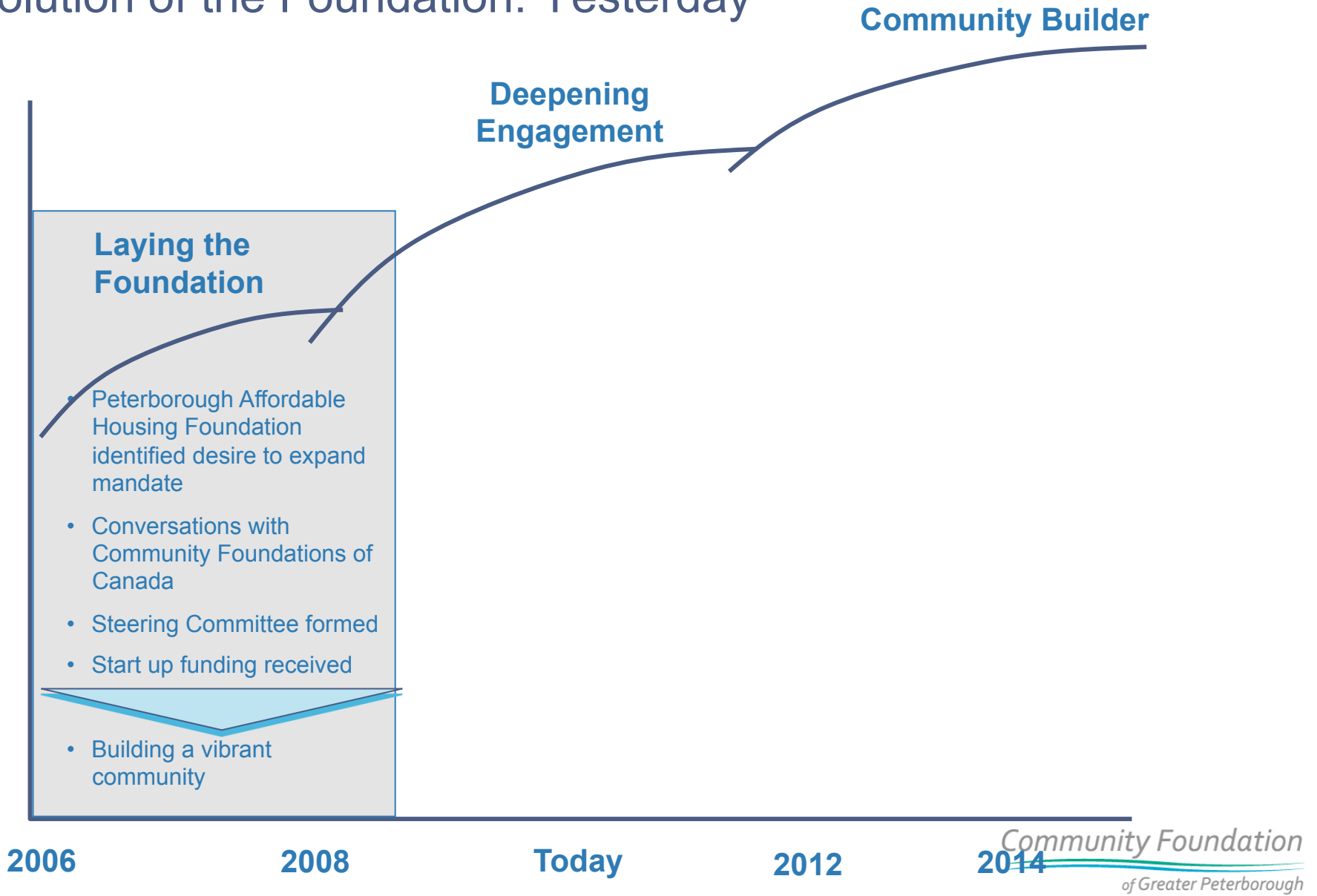
# Community Foundation of Greater Peterborough

## Evolution: Yesterday, Today, Tomorrow

The colour contrast has been set to maximum.

# Community Foundation of Greater Peterborough: Evolution

## Evolution of the Foundation: Yesterday



The colour contrast has been set to maximum.



## Community Foundations of Canada

- Building stronger communities by enhancing the philanthropic leadership of community foundations
  - Supporting established and developing community foundations in their endowment building and donor services, grantmaking and community leadership
  - Promoting and advancing philanthropy and community foundations
  - Modeling philanthropic leadership in Canada and internationally

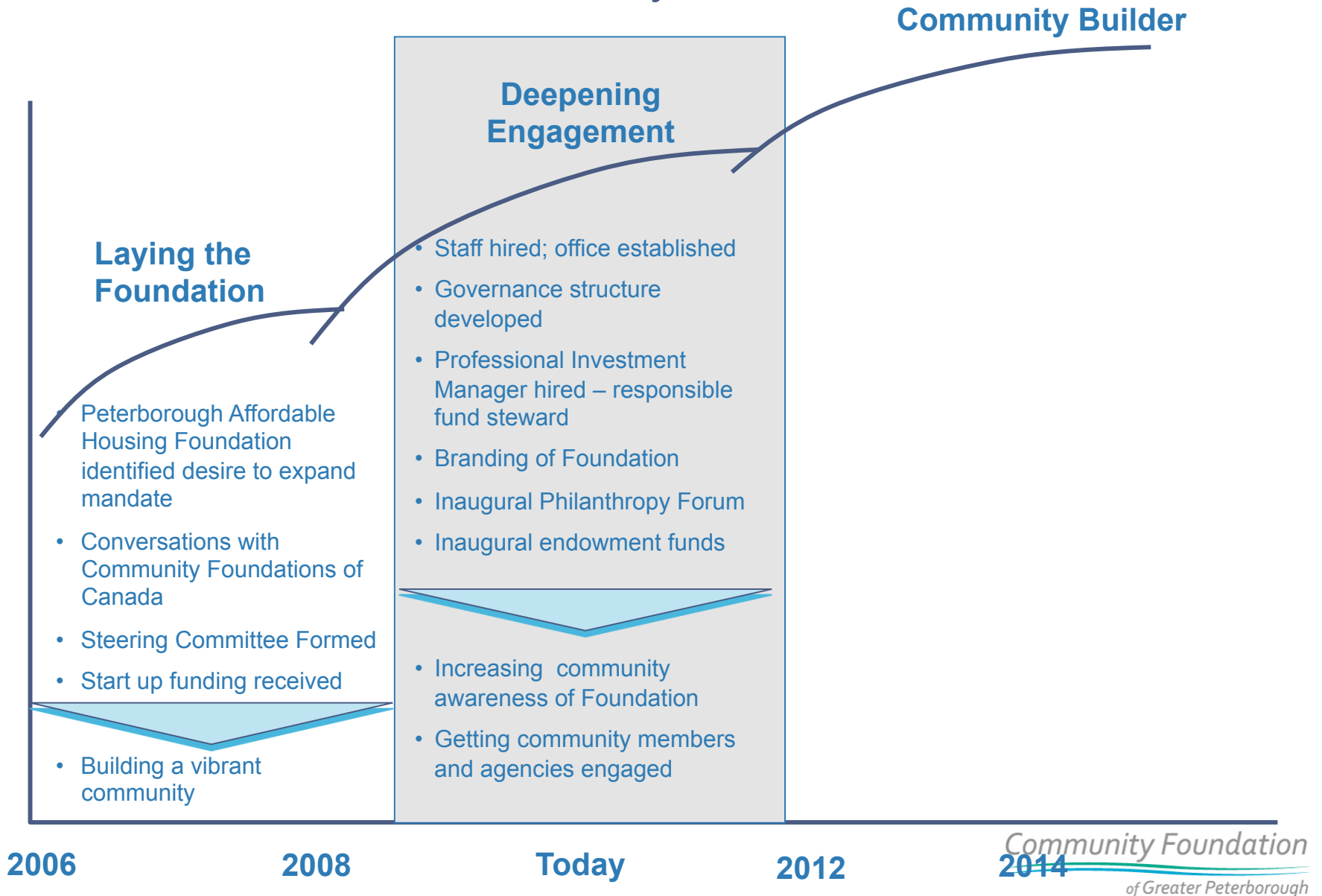
## Board of Directors

Community Member	Role
Bill Lockington	Chair
Su Ditta	Vice Chair
John Martyn	Past Chair
Janice Green	Secretary, Treasurer
Julie Davis	Director
Bob Gallagher	Director
Dianne Lister	Director
Verne McKay	Director
Beth McMaster	Director
Michele Nicholls	Director
Tony Tilly	Director
Carmela Valles	Director
Helene Lowry	Corporate Recording Secretary

The colour contrast has been set to maximum.

# Community Foundation of Greater Peterborough: Evolution

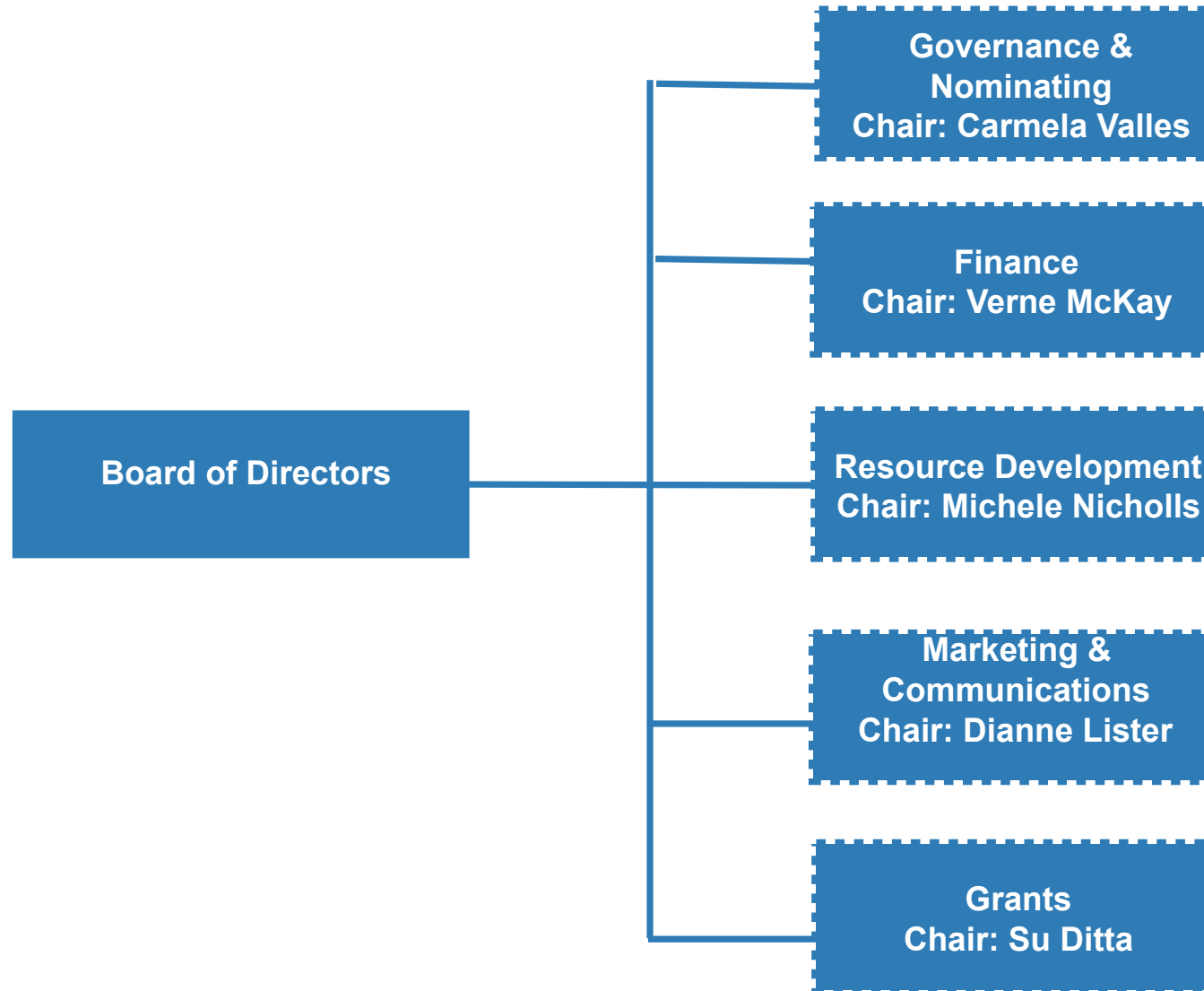
## Evolution of the Foundation: Today



The colour contrast has been set to maximum.

The colour contrast has been set to maximum.

## Organizational Structure



The colour contrast has been set to maximum.

Community Foundation of Greater Peterborough: Evolution

## Philanthropy Forum



**National Philanthropy Day®**

Date: Tuesday, November 16, 2010  
Location: Peterborough Golf and Country Club  
Rate: Full day program \$40.00 / PAFN Member

*Community Foundation*  

---

*of Greater Peterborough*

The colour contrast has been set to maximum.

The colour contrast has been set to maximum.

Community Foundation of Greater Peterborough: Evolution

## Philanthropy Forum



### **National Philanthropy Day®**

#### Day Program

- Building relationships with corporate and private foundations
- Board Basics
- Fundraising and receipting compliance issues
- Voluntary sector standards initiative
- Ethical decision making at the personal and organizational level
- Donor philanthropy: supporting, recognizing, empowering
- Philanthropy roundtable discussions

[www.cfgp.ca/forum](http://www.cfgp.ca/forum)

*Community Foundation*  

---

*of Greater Peterborough*

Community Foundation of Greater Peterborough: Evolution

## Philanthropy Forum



### **National Philanthropy Day®**

#### Evening Program

- A celebration of the impact that philanthropy—and those people active in the philanthropic community—have made to our lives and our community.
- Featuring keynote speaker Marnie A. Spears, President and CEO of KCI – Ketchum Canada Inc.

*Community Foundation*  
*of Greater Peterborough*

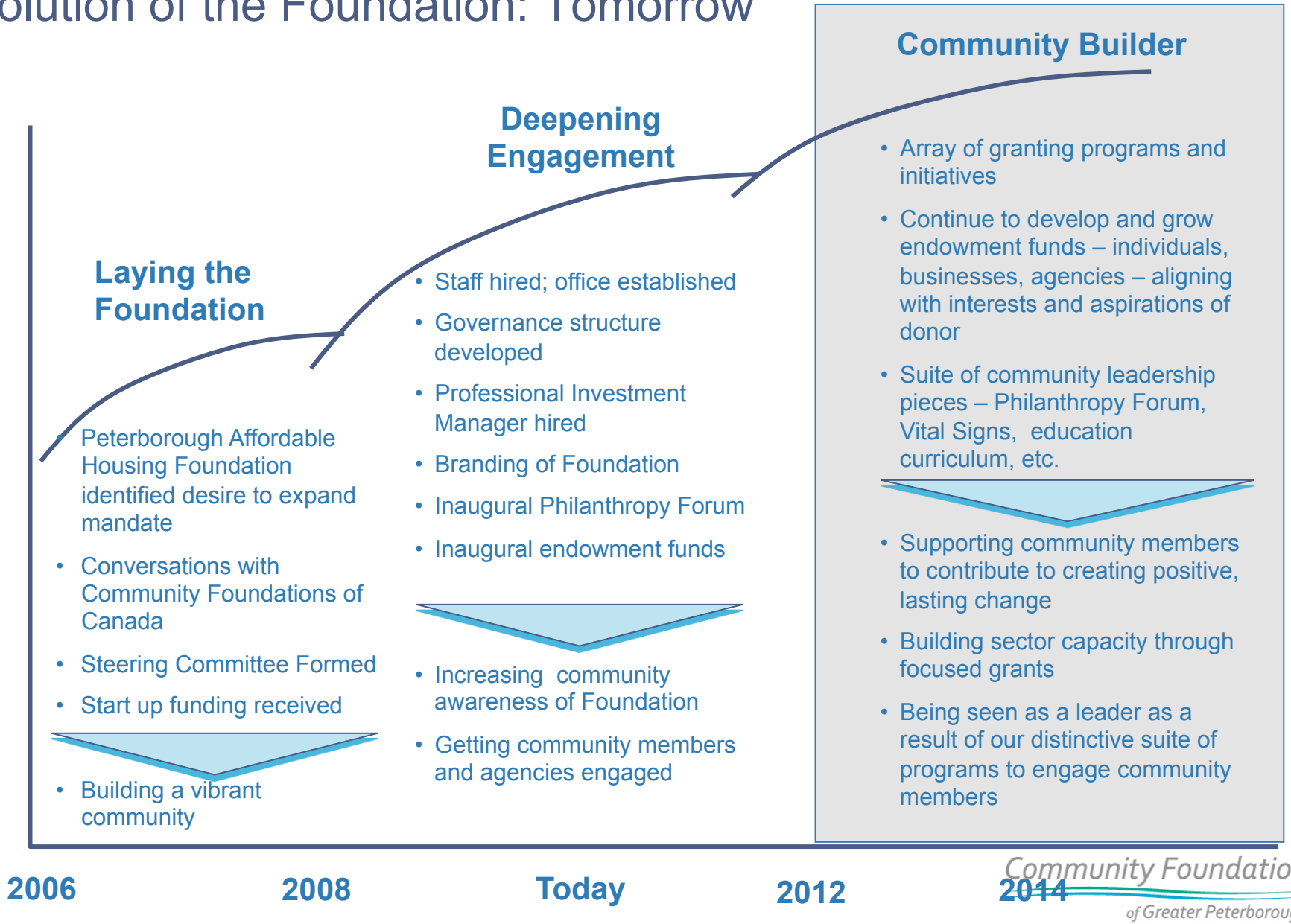
The colour contrast has been set to maximum.

The colour contrast has been set to maximum.

The colour contrast has been set to maximum.

# Community Foundation of Greater Peterborough: Evolution

## Evolution of the Foundation: Tomorrow



The colour contrast has been set to maximum.



# Pillars of a Community Foundation

The colour contrast has been set to maximum.

## Pillars of a Community Foundation

### What do we do?

- Provide a means whereby the community's charitable assets and decision-making can be applied locally
- Pool the charitable gifts of many donors into a permanent, income-earning endowment that benefits the people of Peterborough City and County and fulfills the philanthropic objectives of individual donors

## Pillars of a Community Foundation

### What do we do?

- Make grants from the earnings of funds to support a broad variety of initiatives from health, education and social services to arts, culture and the environment
- Offer advice and support to individuals and organizations making philanthropic decisions
- Provide leadership by bringing people together from all sectors to identify and address issues and to leverage opportunities in the region

## Pillars of a Community Foundation

# Three pillars of a Community Foundation

### Endowment Building

- Endowment funds are created by financial contributions from individuals, families, groups or corporations
- Donations support charitable programs and projects
- Long-term resources for long-term solutions
- Professional Investment Manager
- Types of Funds:
  - Donor Advised
  - Donor Designated
  - Charitable Organization
  - Field of Interest
  - Local Community Fund

### Grantmaking

### Community Leadership

## Pillars of a Community Foundation

# Three pillars of a Community Foundation

Endowment Building

Grantmaking

Community Leadership

- Broadest view of what a community is and what it needs to succeed
- Help donors formulate and realize philanthropic goals
- Match interest and concerns of donors with community needs and organizations
- Income from endowment funds provided to charities in form of grants

## Pillars of a Community Foundation

# Three pillars of a Community Foundation

Endowment Building

Grantmaking

Community Leadership

- Take a leadership position in the community through our strategic and connected approach
- Convening, providing opportunities to develop local knowledge, working with like-minded partners and finding creative solutions to shared challenges
- A model in the community, raising the bar for philanthropic involvement and signaling the importance of supporting the sector

*Community Foundation*  
of Greater Peterborough

The colour contrast has been set to maximum.

The colour contrast has been set to maximum.

Community Foundation of Greater Peterborough

Community foundations respond to community needs.

Community Foundations offer unique opportunities for individual citizens to give back to the community they love.

*Community Foundation*  
  
*of Greater Peterborough*

The colour contrast has been set to maximum.

The colour contrast has been set to maximum.

# Questions?

The colour contrast has been set to maximum.



# Thank you

Contact Information:

705.740.2347

[andrea.dicks@cfgp.ca](mailto:andrea.dicks@cfgp.ca)

[www.cfgp.ca](http://www.cfgp.ca)

*Community Foundation*  
  
*of Greater Peterborough*

The colour contrast has been set to maximum.

The colour contrast has been set to maximum.